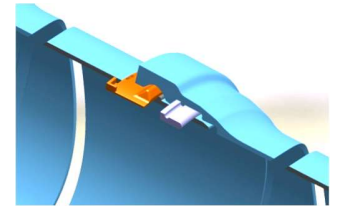


**PUSHLOK RESTRAINED FLEXIBLE JOINT - 30 INCH**
**PERFORMANCE AND ACCESSORIES**

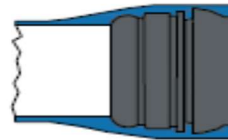
Size	No. of locking segments	No. of rubber retainer	No. of Clamp	Working Pressure	Maximum allowable deflection	Bell Outer Diameter	Pull out
30"	10	1	1	350 PSI	2°	36.5 inch	.05 ft

**BASIC FEATURES**

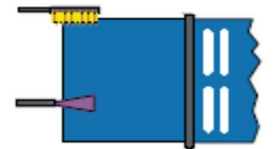
- Withstand high Working Pressure
- Normal push-on joint gasket to be used for sealing
- Easy to assemble and disassemble
- Suitable for Trenchless Application


**ASSEMBLY INSTRUCTION**

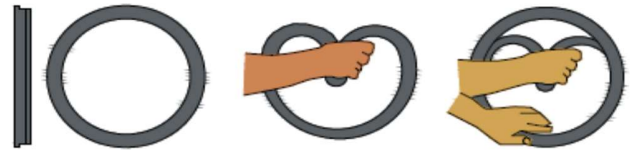
- 1) Ensure that socket windows are accessible during laying
- 2) Clean socket inside and spigot outside
- 3) Put the gasket inside the groove like normal push-on joint pipes
- 4) Lubricate exposed portion of the gasket and the spigot end.
- 5) Align the jointing pipe properly
- 6) Push the spigot end by suitable means until it stops. Do not deflect the pipe. Do not remove the lifting device before the complete connection has been made.
- 7) Insert the locking segments through the bell window and slide around the pipe. Repeat the same for all the locking segments.
- 8) Hold the upper segment and place the rubber retainer in one of the bell windows.
- 9) Withdraw the pipe up to the stop locks to remove the slack in the locking segments. Now the assembly is locked.
- 10) Clamp the locking segments on the pipe, with the clamp, provided with the pipes.
- 11) Deflect the pipe if required.



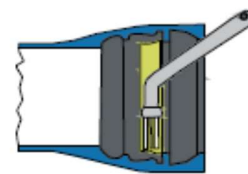
Socket Cleaning



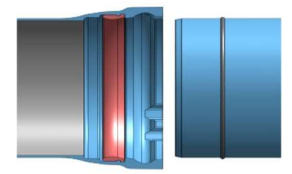
Spigot Cleaning



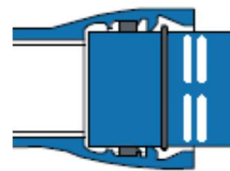
Gasket Insertion



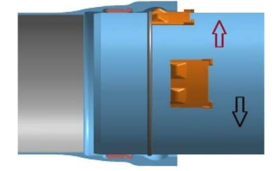
Lubrication



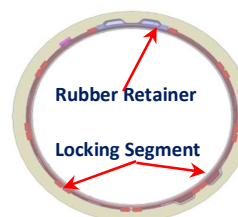
Alignment



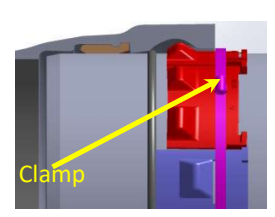
Spigot Insertion



Locking Plates



Lock plate &amp; Rubber Retainer



Clamping